



Chain

TÜV-tested to meet EN12453.
For doors up to 110 kg/13.5 m²

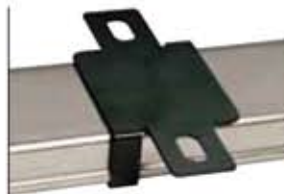
High quality accessories included in the carton



3-channel mini remote control
(5580-2)
(5580K)



Illuminated push button
(5580-2)
(5580K)



Low headroom bracket
(5580-2)
(5580K)



Rail
(5580K)

Input Voltage 230–240 V AC, 50 Hz
Max. Pull Force 800 N
Watts 400 W
Stand-by power 2.6 W

MOTOR

Type Motor with capacitor for start and operation

DRIVE MECHANISM

Drive Chain with two-piece trolley on steel rail
Door height adjustable up to 2.3 m or up to 5 m with appropriate extension
Travel rate 100 mm per second
Lighting turns on when the drive is activated; turns off 2.5 minutes after closing
Door arm adjustable, trolley unlocking device

SAFETY

Automatic stop by pressing a button during forward or backward run and obstacle detection
Power recognition automatic
Overflow protection Transformer overload protection and low voltage cabling for accessories
Limit switch setting electronic, semi and fully automatic; optical detection of speed and door position

DIMENSIONS

Length (overall) 3.1 m
Headroom required 30 mm
Hanging weight 14.5 kg

RECEIVER

Memory Registers 8
Memory Registers 1 – keypad code memory
Frequency 433.92 MHz

SPECIAL NOTE

Chamberlain strongly recommends to install the protector system on all garage door openers!

