

## APPLICATIONS

The Model GH continuous-duty door operator is designed for use on rolling doors and grilles and industrial sectional doors with high or vertical lift.

### Balanced

Industrial Door Operators for counterbalanced doors.

### Standard Features

- Control Circuit: Reversing Contactor Circuit (M)Features the industrial linear contactor
- Floor level chain hoist with electrical interlock for emergency manual door operation
- High starting torque continuous-duty motor with overload protection
- Heavy-duty wormgear-in-oil-bath speed reducer
- 3-button control station
- Hoist wheel is easily moved to Right or Left hand side of unit eliminating the need to order left or right hand mounting
- Solenoid brake, standard
- 24VAC control circuit
- Type C2 wiring standard, B2 easily field set by moving 1 jumper wire or setting a switch (see Sensing Devices – Accessories)
- Prewired to accept sensing devices
- External radio control terminals
- Fully adjustable linear driven limit mechanism
- Motor removable without affecting limit settings
- NEMA1 type electrical enclosure
- 50B40 sprocket and #50 drive chain – standard on 1/2 thru 1 H.P. models
- 50B60 door sprocket and #50 drive chain – standard on 2 H.P. models
- 80B60 1 3/4" diameter with 3/8" keyway door sprocket and #80 drive chain – standard on 3 H.P. models

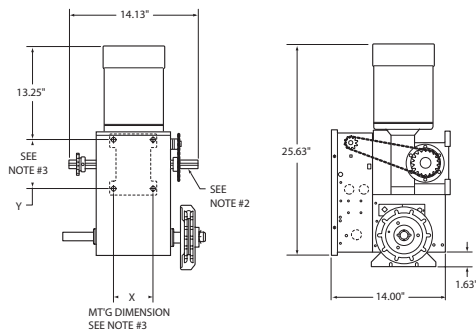


- Baked-on high durability black powder coat finish
- Door speed approximately 8 to 9 inches per second

Maximum Door Area (SQ. FT.)						
Rolling	24 ga. Steel	22ga. Steel	-	20 ga. 18 ga. Steel	16 ga. Steel	-
	Alum. Grilles	Alum. Doors	-	Steel Grilles	-	-
Sectional	-	24 ga. 22 ga. Steel	20 ga. Steel	-	16 ga. Steel	-
	Fiber-glass	Alum. Doors	Wood Doors	-	-	-
	-	-	24 ga. Steel Insul.	-	20 ga. Steel Insul.	16 ga. Steel Insul.
H. P.	1/2	325	300	275	250	225
	1	650	560	500	430	325
	2	-	-	-	640	560
	3	-	-	-	875	840

**NOTE:**  
On steel insulated doors, a 24 ga. back panel is assumed. If a heavier back panel is supplied, use the next higher H.P. rating. For doors 22 ft. wide by 20 ft. high and larger, call factory.

## Technical Information



### NOTES:

- 1) DIMENSIONS VARY WITH HORSEPOWER OF OPERATOR, MAX. DIMENSION SHOWN.
- 2) OUTPUT SHAFT WITH  
1" x 1/4" KEY FOR 1/2 THRU 1 H.P. OPERATORS  
1-3/16" x 1/4" KEY FOR 1-1/2 THRU 2 H.P. OPERATORS  
1-1/4" x 1/4" KEY USED FOR 3 H.P. OPERATORS
- 3) MT'G CENTERS  
X = 4-3/4" Y = 5-1/2" THRU 2 H.P. OPERATORS  
X = 3-17/32" Y = 9-1/16" FOR 3 H.P. OPERATORS

### OPERATOR AMP RATING (FULL LOAD)

H.P.	1/2	1	2	3
220-1Ø	3.6	6.2	-	-
380-3Ø	-	-	3.7	5.4

## ORDERING (Sample GH 50 25 M)

### 1/2 H.P.

- **Model GH 50 25**, Circuit Type M
- 230 V/50 Hz/Single Phase

### 1 H.P.

- **Model GH 10 25**, Circuit Type M
- 230 V/50 Hz/Single Phase

### 2 H.P.

- **Model GH 20 38**, Circuit Type M
- 380 V/50 Hz/Three Phase

### 3 H.P.

- **Model GH 30 38**, Circuit Type M
- 380 V/50 Hz/Three Phase

### Door Sprocket Substitutions

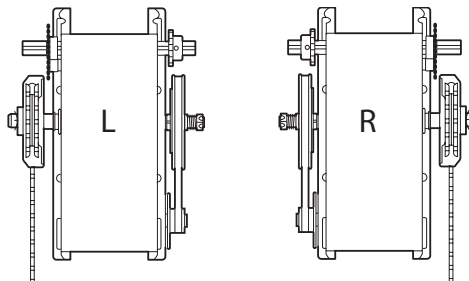
**Model 50B60** Sprocket, (specify bore and keyway) in lieu of 50B40

**For all other sprocket substitutions consult factory**

**Sectional sprockets are available consult factory**

**REMEMBER:** When ordering, please add to the model number the hoist position (Right or Left Hand Hoist). Example: H5025MR, right hand.

Please note left or right hand hoist position at end of model number.



**WARNING:** This door operator is intended for use on vehicular doors. **MOTORIZED VEHICULAR DOORS CAN CAUSE SERIOUS INJURY OR DEATH!** Use entrapment protection equipment and other safety accessories on every door system.

## CONTROL CIRCUIT

### Reversing Contactor Circuit (M)

(24V NEC Class 2 Circuit with 40 VA transformer)

Industrial linear contactor provides significantly longer control runs than conventional contactors. Circuit provides easy selection between C2 and B2 wiring with the movement of a single wire.

