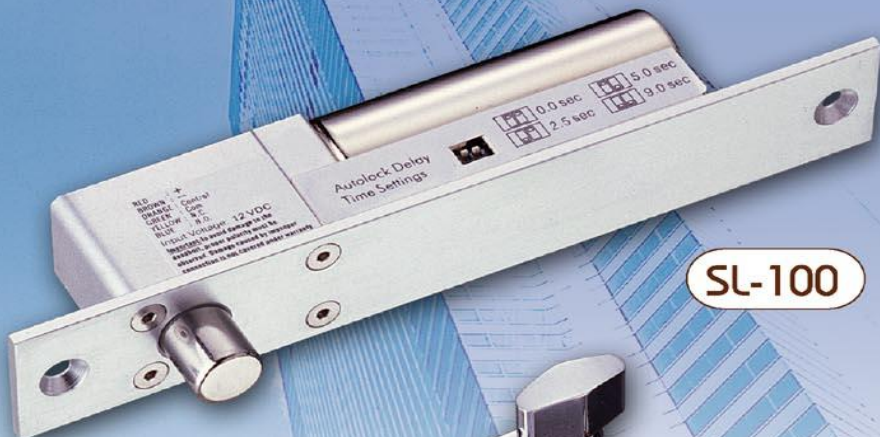


# SOCA<sup>®</sup>

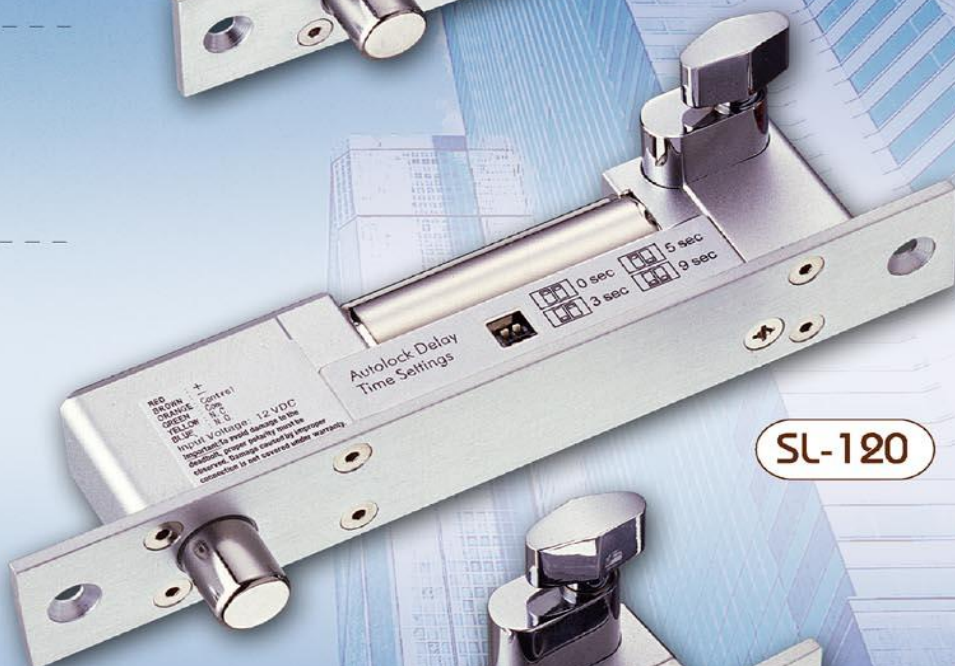
# Electric Dead-Bolt Lock Series

Sturdy/durability/easy installation

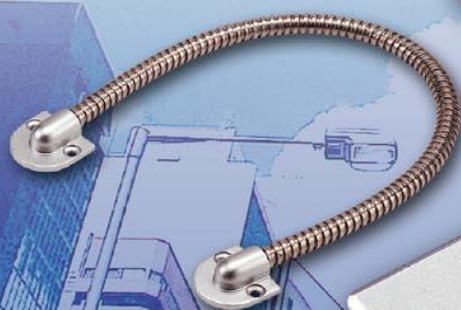
- Suitable for use at public places and fire exit.
- Built-in door and lock position monitoring.
- Built-in delayed egress control point, MOV surge protection.
- Easy installation, high security.



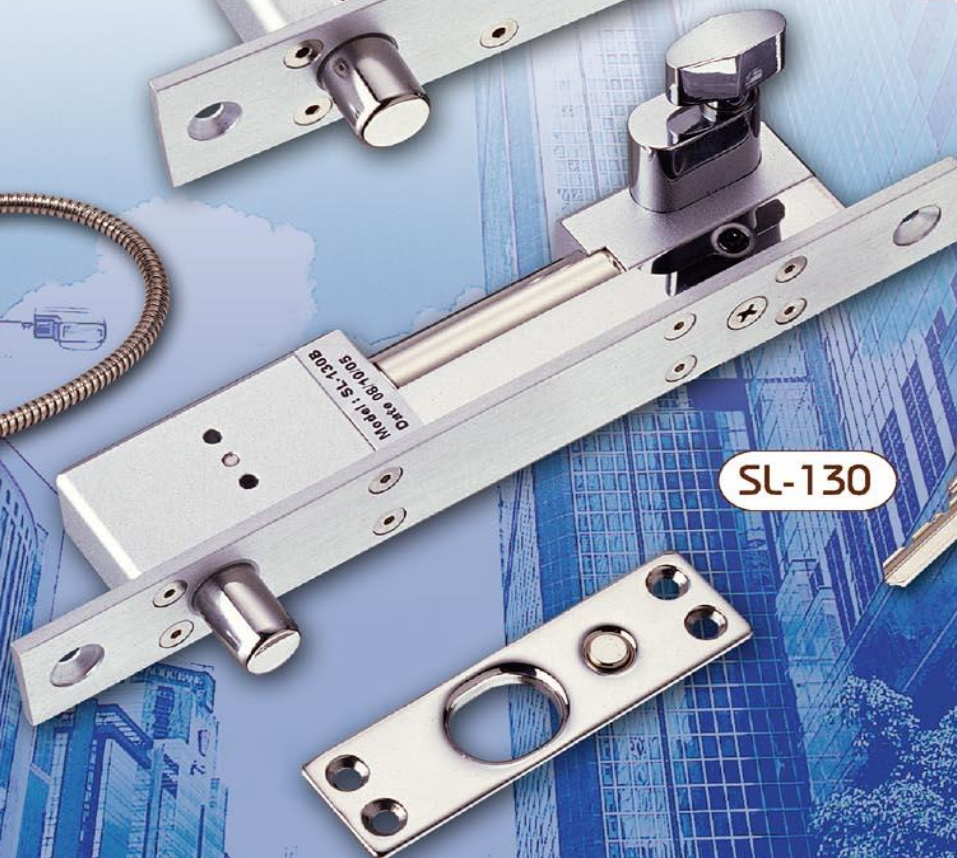
SL-100



SL-120



SD-30



SL-130



# SPECIFICATIONS

MODELS SPECIFICATIONS	SL-100 series	SL-120 series	SL-130 series
Voltage	DC 12V	DC 12V	DC 12V
Currents(to activate)	900mA	880mA	880mA
Currents(standby)	330mA	0mA(normal),Hold current:320mA	250mA
Type	Fail-safe type	Fail-seure type	Fail-safe type Fail-seure type (adjustable)
Monitor output	Door and lock position monitoring.		
Suitable for	Public places	Home,Office	All places
Door lock delay	0 sec. / 2.5 sec. / 5 sec. / 9 sec.		
Push button point	Built-in delayed egress control point.		
Types of door	Suitable for 180° swing door.		
MOV surge protection	Built-in	Built-in	Built-in
Emergency door open	Fail-safe type	Oval Cylinder will unlock	Same as SL-120
Dimensions of the unit	200(L)x32(W)x42(H)mm	200(L)x32(W)x42(H)mm	200(L)x25(W)x34(H)mm
Dimensions of the Strike Plate	90(L)x26(W)x2(H)mm	90(L)x26(W)x2(H)mm	90(L)x23(W)x2.5(H)mm
Dimensions of Bolt	Throw :16mm Diameter : 15.5mm	Throw :17mm Diameter : 15.5mm	Throw :16mm Diameter : 12.7mm
Weight	880g	1060g	745g

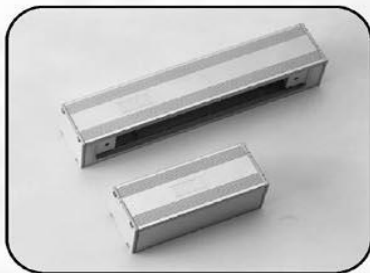
## Models :

- SL-100A Door monitoring : N.C pole.
- SL-100B Door monitoring : N.C & N.O pole.
- SL-100M Door and lock position monitoring : N.C/N.O pole.
- SL-100D Suitable for electric auto door, retriggerable output included.

## Models :

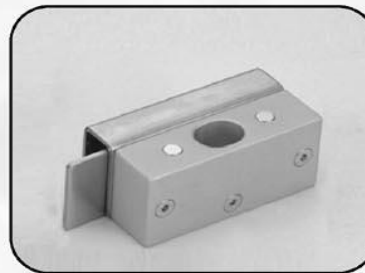
- SL-120A Door monitoring : N.C & N.O pole.
- SL-120B Door and lock position monitoring : N.C/N.O pole.
- SL-130 Door and lock position monitoring : N.C/N.O pole.

## Accessories



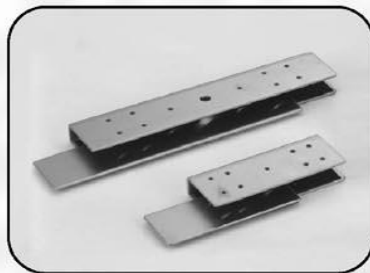
### BR-100 Surface Mount Bracket

1. Surface mount the bracket when unable to drill holes in the door frame.
2. Glass door.
3. Door frame which is too narrow .



### BR-100C Bracket

1. BR-100 brackets.
2. Glass door (frameless).
3. Thickness of glass: 9-12mm



### UB-100 Glass Holder

1. BR-100 brackets.
2. Glass door (frameless).
3. Thickness of glass: 9-12mm.



### SD-30 Armored door Loop

1. Flexible stainless steel conduit.
2. Flexible conduit internal diameter: 70mm
3. Flexible conduit length: 300mm

**PROFESSIONAL**