



**Civik, Rex, Valor, Ten**

**Automations for  
straight-line sliding doors**



# DITEC automatic doors. A sign of distinction.

Comfort, safety, prestige, hygiene, appeal, access control and, in the case of air-conditioned areas, optimised energy consumption: these are just some of the advantages that you can have from an automatic door.

DITEC is a leading manufacturer of these functional and useful automations.

Today's life has made it more and more frequent and common to find doors that open when we get near them. Thanks to cutting-edge technology, superior quality of processes and materials, our automatic sliding doors, opening and closing smoothly and trouble-free, not only give the building something more in terms of look, novelty and appeal but they also make the life of the people using them more and more comfortable.

This is why having an automatic door is not only a question of image and adaptation to advanced technical solutions, it is also a sign of care for the people that come and go, in that it makes their life easier.

Automatic doors also provide an useful means to solve problems arising from architectural barriers.

DITEC constant commitment to study new solutions and offer the widest range of products to meet any customer requirement are a tangible reality.















# DITEC.

## A comprehensive and certified range.

DITEC offers the market the widest automation range available for straight-line sliding pedestrian doors, capable of satisfying any particular requirement or performance: from the high-opening speed automatic systems for high-traffic entrances, to the smooth and controlled motion systems for house installations. These automatic systems are easy to install and come in a variety of aesthetic solutions that can match any type of furniture.

DITEC also provides solutions with specially designed antipanic devices, designed to increase safety levels and to facilitate access to escape routes in emergencies. The following tables allow customers to select the most suitable automations for individual requirements and to check their comprehensive and advanced technical features.

### Civik

Ideal for next generation offices and private housing.

---

### Rex

Simple and versatile.

The very popular automation for commercial premises.

---

### Valor

The top of the range.

For the most demanding commercial applications  
(large shopping centres, airports).

For special applications in hospitals and atmospherically controlled environments.

---

### Ten

Reduced height automation: only 100 mm high.

Ideal for high-tech commercial fronts

---



# Rex

Simple and adaptable.  
For very heavy duty.

Easy assembly and multi-purpose applications make Rex a widely known automation. The traction unit and the electronic control panel in one block, make assembly time shorter.

Many components are in common with other automations of the DITEC line and this is a sure advantage for our customers.

## **Guaranteed functioning even without electricity**

A device with built-in batteries which ensures operation even in the event of a power failure.

## **Safe and noiseless**

Rex is provided with a 24 V DC motor, a microprocessor logic electronic control panel, an electronic impact-free device with encoder, a photocell device with amplifier, projector and receiver.

The casing is made of aluminium extrusion and traction is performed by means of a synthetic toothed belt.

Rex, like all the other DITEC automations can come with a complete range of original DITEC accessories for control and safety, in addition to the specific accessories included in the line.



# Technical specifications

## Technical specifications of models available

Features	REX - REX V
Description	automation for sliding doors
Special uses	elasticated anti-panic device
Travel control system	encoder
Maximum capacity	100 kg (1 wing) / 140 kg (2 wings)
Duty class	5 - very heavy duty
Intermittent operation	S3 = 100%
Power supply	230 V~ / 50-60 Hz
Insulation class	class 1
Power input	0.5 A
REX - Maximum opening speed	0.5 m/s (1 wing) / 1 m/s (2 wings)
REX V - Maximum opening speed	0.6 m/s (1 wing) / 1.2 m/s (2 wings)
REX - Maximum closing speed	0.35 m/s (1 wing) / 0.7 m/s (2 wings)
REX V - Maximum closing speed	0.6 m/s (1 wing) / 1.2 m/s (2 wings)
Release system for manual opening	handle type
Operating temperature	-20°C / +55°C (-10°C / +50°C with batteries)
Protection rating	IP 20
Product dimensions (mm)	100 x 190 x L
Built-in control panel	192C REX - EL16 REX V

## Main system functions

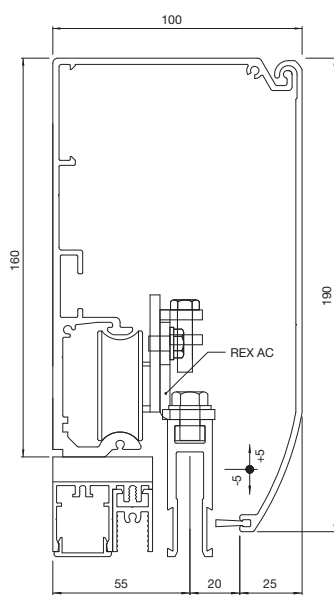
Features	REX	REX V
Control panel	192 C	EL 16
Mains power supply	230 V~ / 50-60 Hz	230 V~ / 50-60 Hz
Batteries	/ (optional)	/ (optional)
Energy saving	reduced consumption when in use	reduced consumption when in use
Number of motors	1	1
Motor power supply	24 V= / 5 A	24 V= / 8 A
Accessories power supply	24 V= / 0.3 A	24 V= / 0.5 A
Electrically operated lock	24 V= / 1 A	24 V= / 1 A
Encoder	/	/
Force adjustment control		electronics
ODS - Obstacle detecting system	/	/
Speed adjustment		/
Braking / Deceleration	/	/
Open control	/	/
Push opening		/
Partly open control	/	/
Close control	/	/
Automatic timed close control	/	/
Stop safety device	/	/
Reverse operation safety device	/	/



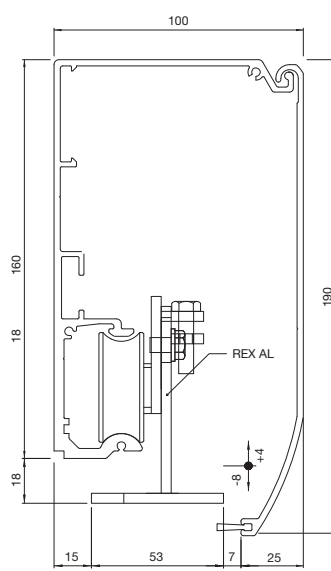




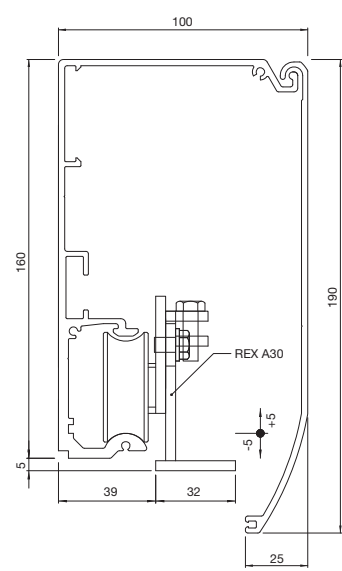
**Rex - Vertical sections with different types of wing connection**



**REX AC**



**REX AI**



**REX A30**

# Accessories

Each automation system should be completed with control and safety devices compatible with all the components of the automation and complying with regulations in force.

DITEC offers premium quality products and accessories, which satisfy any requirement.

## Function program selectors with and without key lock.

**COM** are the new electronic, mechanical and analogue program selectors designed to select and set desired operation modes for one or more automatic doors.

Suitable both for sliding and swing doors by simply replacing the frontal keypad, which is usually supplied with the product.

Recognition of the type of automation it is connected to is completely automatic.



COM E



COM EL

### COM E

COM E is the digital electronic selector switch specially designed to set up the 94 type electronic panel operating modes, to control one or more VALOR and TEN automations. It consists of a unit fitted with a microcontroller, with a front keyboard and a LED indicator.

It can be wall, surface mounted or recessed, and has been designed in a format compatible with the square shape of switches and power sockets.

#### Operating modes:

- COM E allows up to 4 doors to be set up in the same operating mode.
- Two COM E can be connected on the same automation.
- COM EL is also available: a practical, useful and colour matched accessory designed to externally block the door with a key.



COM H



COM K

### COM H and COM K

These are the new function rotary program selectors for automatic door operation mode setting.

Available in two versions, with actuation by handle (COM H) or by key (COM K), these are both provided with a double interchangeable frontal keypad, for sliding or swing doors.

The control instrument is a 6-position rotary electromechanical changeover switch.

These units as well have provision for wall fastening, surface or flush mounting, and their size is perfectly compatible with switch and socket square standard.



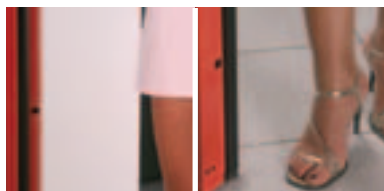
COM GTC

COM GT

### COM G and COM GC

These are the new radio controlled selector switches used to set up the operating modes of automatic doors. Available in the COM G version, with 8 door status selecting modes, and in the COM GC version, specifically designed for CIVIK automation, with 6 door status and open and close control mode selection modes.

## Safety photocells.



These photocells provide greater control during detection of possible obstacles.

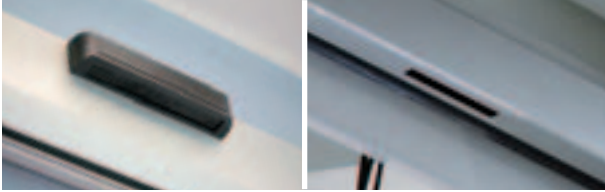
They are practical and almost invisible and can be positioned at different heights.



## Volumetric sensors.

These are advanced electronic systems, which detect presence or passage of people in a specific area facing the entrance and have the function to control door opening and closing, and to ensure safe passage.

## Safety area sensors.



PAS AT3 is an active infrared sensor able to monitor a person approaching or standing by the door, with the option to control the width and depth of the detection area, as well as how much and frequently it is being used. Available in the recessed version, built in the VALOR automation, or wall mounted.

## Control area sensors.



### Infra-red active sensors

Wide range of functions:

- detection area width and depth adjustment
- application level adjustment
- functional sensitivity adjustment
- people detection time adjustment



### Passive, infra-red sensors

These have the following features:

- sensitivity adjustment and opening selection
- opening field zoom adjustment



### Microwave sensors

This is a volumetric, one- or two-direction system, which can be fitted on walls or on the ceiling through its bearing. Accurate motion detection. Parameters can be modified even from a distance by means of a remote control.

## Push-buttons for disabled use.



Painted or SS elbow-shaped rectangular push-buttons.

Push-buttons for door opening in public environments or for disabled use. Recessed mounted on aluminium profiles or surface mounted by means of a special casing.

## Control buttons.



Door opening is by means of press or touch buttons.

## Sensitive floor mats.



These mats can be positioned under carpets to detect presence and control door opening.

## Digital or key selectors.



These selectors allow access to authorised people only. They can be fitted both indoors and outdoors. Can have a key version and a vandal-proof keypad.

## Opening contact sensors or transponder technology control sensors.



These sensors enable door opening through buttons or codified cards. They are the ideal solution to automate entrances in companies or private buildings wherever access should be allowed to authorised people only.

# Standards

The system has been manufactured by using only DITEC manufactured accessories and safety devices.

All DITEC automations have the CE marking and are designed and manufactured in compliance with Machine Directive (2006/42/EC), EMC Directive (2004/108/EC) and Low Voltage Directive (2006/95/EC) safety requirements, as well as with other specific Directives, laws and standards relating to particular products and circumstances.

DITEC S.p.A. operates a policy of continuous development and reserves the right to make changes and improvements to their products.

DITEC S.p.A. are always striving to improve their products. The technical data contained within this document is therefore not binding.

The pictures shown in this brochure have been taken with the owners' approval or in public areas and carried out by Ditec staff. It is strictly forbidden to use such pictures without Ditec's approval.

The pictures sometimes show optional accessories.

Further information can be found in our on-line Technical Manuals at: [www.ditec.it](http://www.ditec.it)



### DITEC S.p.A.

Via Mons. Banfi, 3 - 21042 Caronno Pertusella (VA) - ITALY  
Tel. +39 02 963911 - Fax +39 02 9650314  
[www.ditec.it](http://www.ditec.it) - [ditec@ditecva.com](mailto:ditec@ditecva.com)



ISO 9001  
Cert. n° 0957

**DITEC BELGIUM**  
**DITEC DEUTSCHLAND**  
**DITEC ESPAÑA**  
**DITEC FRANCE**  
**DITEC GOLD PORTA**  
**DITEC SVIZZERA**  
**DITEC AMERICA**  
**DITEC CHINA**  
**DITEC TURCHIA**

LOKEREN  
OBERURSEL  
ARENYS DE MAR  
PALAISEAU  
ERMESINDE-PORTUGAL  
BALERNA  
ORLANDO-FLORIDA-USA  
SHANGHAI  
ISTANBUL

Tel. +32 9 3560051  
Tel. +49 6171 914150  
Tel. +34 937958399  
Tel. +33 1 64532860  
Tel. +351 22 9773520  
Tel. +41 848 558855  
Tel. +1 407 8880699  
Tel. +86 21 62363861/2  
Tel. +90 21 28757850

Fax +32 9 3560052  
Fax +49 6171 9141555  
Fax +34 937959026  
Fax +33 1 64532861  
Fax +351 22 9773528/38  
Fax +41 91 6466127  
Fax +1 407 8882237  
Fax +86 21 62363863  
Fax +90 21 28757798

[www.ditecbelgium.be](http://www.ditecbelgium.be)  
[www.ditec-germany.de](http://www.ditec-germany.de)  
[www.ditecespanola.com](http://www.ditecespanola.com)  
[www.ditecfrance.com](http://www.ditecfrance.com)  
[www.goldporta.com](http://www.goldporta.com)  
[www.ditecswiss.ch](http://www.ditecswiss.ch)  
[www.ditecamerica.com](http://www.ditecamerica.com)  
[www.ditec.cn](http://www.ditec.cn)  
[www.ditec.com.tr](http://www.ditec.com.tr)