

Flag

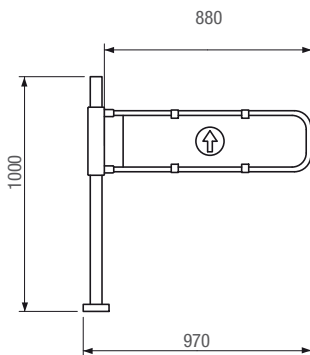
Mechanical swing turnstiles



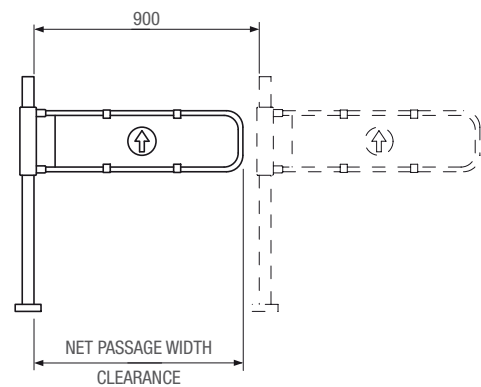
The ideal spring-return solution for selecting pedestrian transit

- The mechanical push-to-open turnstile.
- A ready-to-use solution for managing people flows.
- Useful when needing to control and manage people passage flows for safety and hygienic reasons.
- Today even with lock.

Dimensions (mm)



Application (mm)



Technical features

Type	PSBPCWO - PSBPCCW - PSBP00 - PSBPCW0A - PSBPCCWA - PSBP00A
Weight (Kg)	10

The complete range



Code	Description
Mechanical turnstiles	
001 PSBPCW0	Mechanical swing turnstile with right-hand post. H = 1,000 mm / 39.37 in L = 900 mm / 35.43 in.
001 PSBPCCW	Mechanical swing turnstile with left-hand post. H = 1,000 mm / 39.37 in L = 900 mm / 35.43 in.
001 PSBP00	Bi-directional mechanical swing turnstile. H = 1,000 mm / 39.37 in L = 900 mm / 35.43 in.
001 PSBPCW0A	Mechanical swing turnstile with right-hand post, lock and key. H = 1,000 mm / 39.37 in L = 900 mm / 35.43 in.
001 PSBPCCWA	Mechanical swing turnstile with left-hand post, lock and key. H = 1,000 mm / 39.37 in L = 900 mm / 35.43 in.
001 PSBP00A	Bi-directional mechanical swing turnstile with lock and key. H = 1,000 mm / 39.37 in L = 900 mm / 35.43 in.
Accessories	
001 PSOPG01	Channeler complete with galvanized metal flange riser, plastic flange cover and AISI 304 stainless steel post with arc H = 1,000 mm / 39.37 in.
001 PSOPG01X	Channeler complete with AISI 304 stainless steel flange riser, flange cover and post with arc H = 1,000 mm / 39.37 in.
Customised treatments	
001 PSMLANT	Extra charge for changing width of leaf (MIN = 500 mm / 19.68 in - MAX = 900 mm / 35.43 in).



NOTE
001PSMLANT Specify the custom width of the leaf (MIN = 500 mm - MAX = 900 mm).